

# *The Mainline Home Series*



**NOR-FAB**  
System Built Homes



**SHELTER**  
HOME SYSTEMS

## WHY SHELTER?

Shelter Home Systems has been supplying affordable and quality built homes to Canadian families for over 40 years.

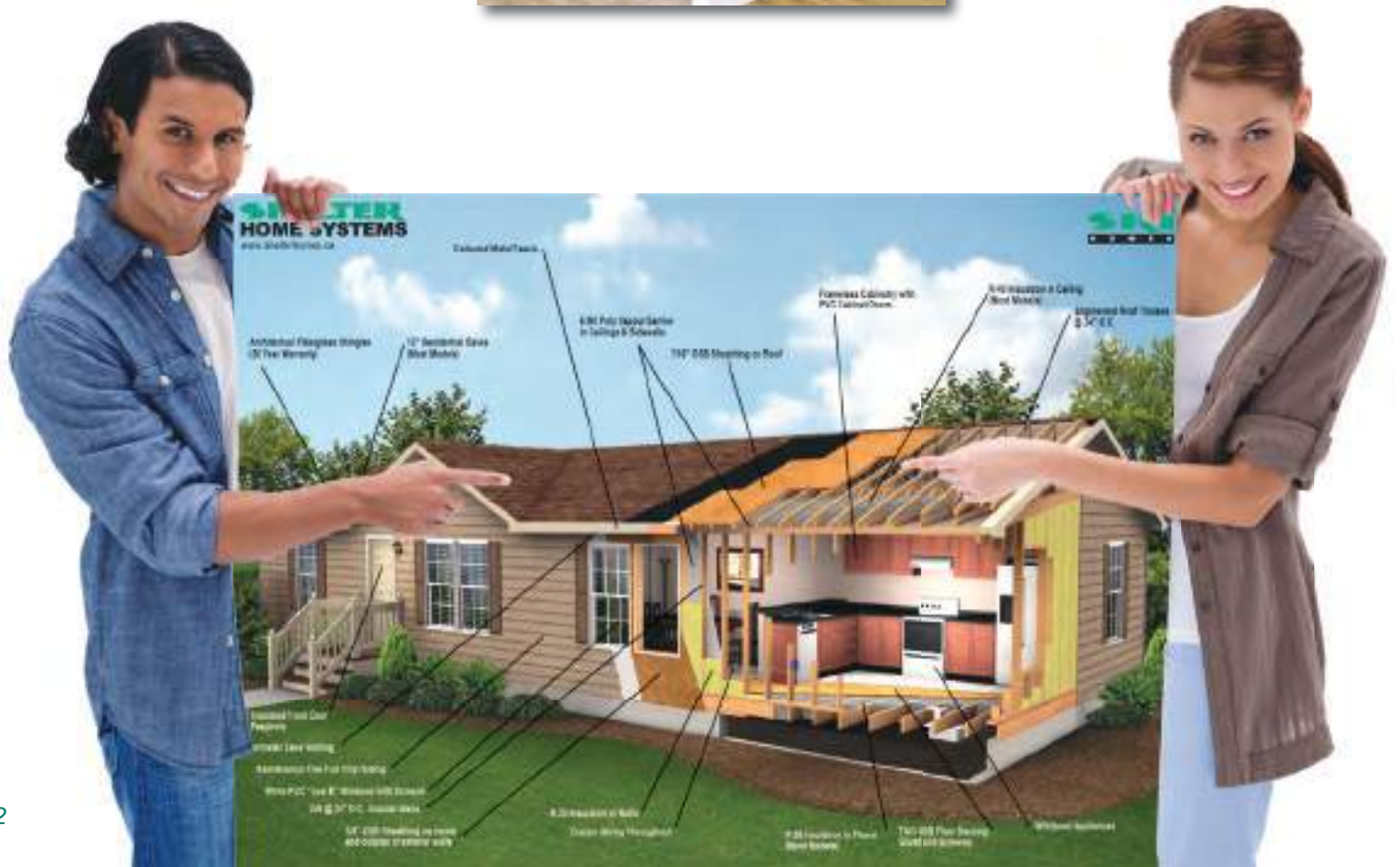
## CHOICES

The Mainline Home series offers so many floor plans to choose from and that is just the beginning. From there you have a multitude of decor options to make your new home your very own.



## QUALITY & AFFORDABILITY

A Mainline home is affordable, yet quality built. There are also many optional features that you can add for that special look. Additionally, every Shelter home is covered by a 10 year warranty supplied by Progressive Home Warranty.



## MODEL SPECIFICATIONS

### STANDARD CONSTRUCTION

- ⇒ Limited Lifetime Architectural Shingles w/Underlayment
- ⇒ Engineered Roof Trusses
- ⇒ Nominal 4/12 Fixed Pitch for < 28' Wides
- ⇒ 3/12 Fixed Roof for 28' - 30' Wides
- ⇒ 4/12 Hinged Roof For > 30' Wides
- ⇒ 12" Residential Eaves on 3 Sides (*4 Sides on Sectionals & RTM*)
- ⇒ 6 MIL Poly Vapour Barrier in Ceiling & Sidewalls
- ⇒ White Metal Fascia & Soffit
- ⇒ Cathedral Ceiling in Kitchen, Dining Room & Living Room
- ⇒ 8' 2 x 6 @ 24" O.C. Outside Walls
- ⇒ 3/8" OSB Sheathing on Inside & Outside of Ext. Walls
- ⇒ Low Maintenance Vinyl Siding
- ⇒ Tubular Laminated Steel Frame: 8" (< 16'x68')  
or 12" (> 16'x68')
- ⇒ 2 x 10 Floor Joists (16' wide), 16" O.C.
- ⇒ I-Joist Floor
- ⇒ T&G OSB Floor Decking; Glued & Mechanically Fastened
- ⇒ Insulation: R-60 Ceiling, R-30 Wall, R-48 Floor
- ⇒ Weatherproof exterior GFI Receptacle
- ⇒ Frost Free Tap c/w Check Valve
- ⇒ Airtight Protocols
- ⇒ Hangered floor on a double LVL rim joist (*RTM Model Only*)
- ⇒ Windows (*1.4 U-Value | PVC Jamb | LowE | w/Screen*):
  - 70x52 In Living Room; White; Sliding
  - 46x42 In Bedrooms; White; Sliding
  - 46x52 In Dining Area; White; Sliding
  - 30x36 In Kitchen; White; Sliding
- ⇒ 36" Insulated No Light Front Door c/w Peephole
- ⇒ 32" Insulated No Light Rear Door c/w Peephole
- ⇒ LED Exterior Pot Light At Each Exterior Door

### KITCHEN

- ⇒ Fridge: 18 CU. FT. Two Door - Top Freezer - White
- ⇒ Range: 30" Electric - White
- ⇒ Range Hood: Two Speed, Vented To Exterior, White
- ⇒ Dishwasher: White
- ⇒ Sink: Two Bowl Stainless Steel w/Single Lever Faucet (*Chrome*)

### BATH

- ⇒ Tub/Shower: One Piece Fiberglass in all Bathrooms
- ⇒ White Oval Sink, Drop in w/Single Lever Faucet (*Chrome*)
- ⇒ Single Flush Toilet w/ Lined Tank (*White*)
- ⇒ Shower Rod & Curtain Liner in all Bathrooms
- ⇒ Chrome Towel Bar & Paper Holder
- ⇒ GFI Receptacles
- ⇒ Dehumidistat on Main Bath Fan

### UTILITIES

- ⇒ 40 GI Electric Water Heater
- ⇒ Electric Furnace
- ⇒ 200 Amp Electric Service Panel
- ⇒ Electric Conduit Through Floor
- ⇒ Incandescent Light Bulb Package
- ⇒ Programmable Thermostat
- ⇒ Copper Wiring Throughout
- ⇒ Plumbed & Wired for Side by Side Washer & Dryer
- ⇒ Shut Off Valves on all Fixtures
- ⇒ Insulated Water Lines in Water Heater Cavity
- ⇒ Smoke/CO Alarms w/Battery Back Up in Hallways
- ⇒ Smoke Alarms (*all bedrooms*)

### INTERIOR FINISH

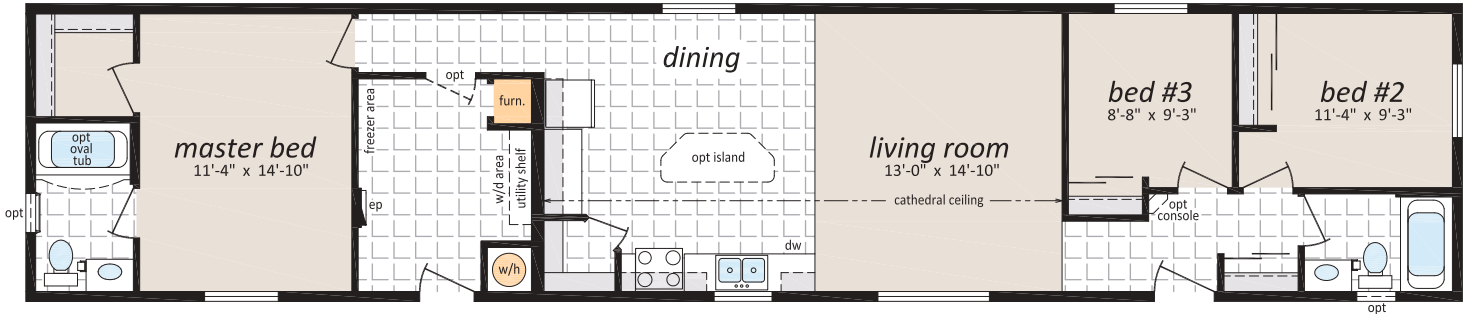
- ⇒ Spraytex 1/2" Gyproc Ceilings
- ⇒ 100% Polyurethane Carpet in Living Room & Bedrooms
- ⇒ No Wax Vinyl Flooring in Areas Without Carpet
- ⇒ Wall Finish: Decorative Vinyl Over Gyproc (VOG)
- ⇒ Battens On VOG Joints
- ⇒ Ceiling Trim: 1-1/2" Battens
- ⇒ Baseboards: 356 Profile White
- ⇒ Window/Door Trim: 356 Profile White
- ⇒ Closets: Battens throughout
- ⇒ Pewter Interior Door Hardware T/O - Lever Handles
- ⇒ Pre-finished White Flat Interior Doors
- ⇒ Solid Closet Shelving
- ⇒ Toggle Light Switches
- ⇒ Modular Cabinets w/ Roller Drawer Hardware
- ⇒ PVC Wrap Cabinet Doors w/Pewter Euro Style Handles
- ⇒ Cabinet Crown Moulding: 510 Profile (*Matching Cabinet Colour*)
- ⇒ 3" White Subway Kitchen Tile Backsplash (*White Grout*)
- ⇒ Laminated Countertop
- ⇒ Utility Cabinets above Washer & Dryer
- ⇒ One Bank of Drawers



## ML-161

16' x 76' - 1,216 sq. ft.  
3 Beds, 2 Baths

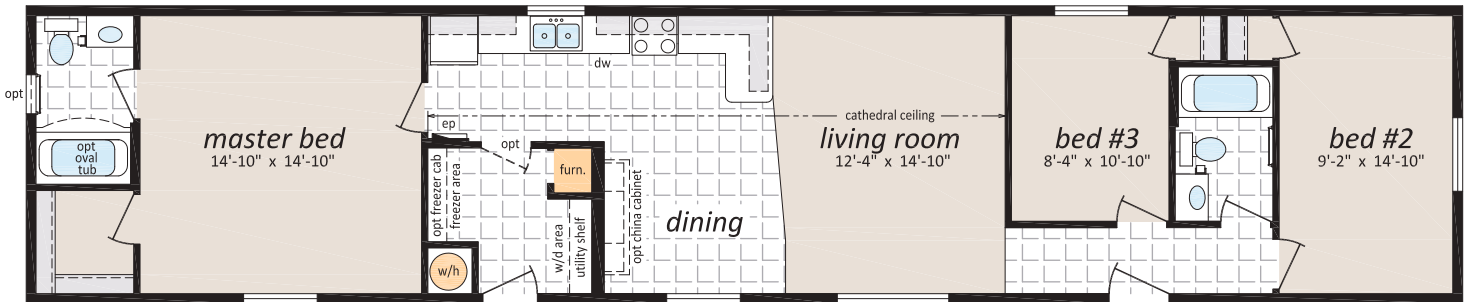
Starts From \$180,000



## ML-162

16' x 76' - 1,216 sq. ft.  
3 Beds, 2 Baths

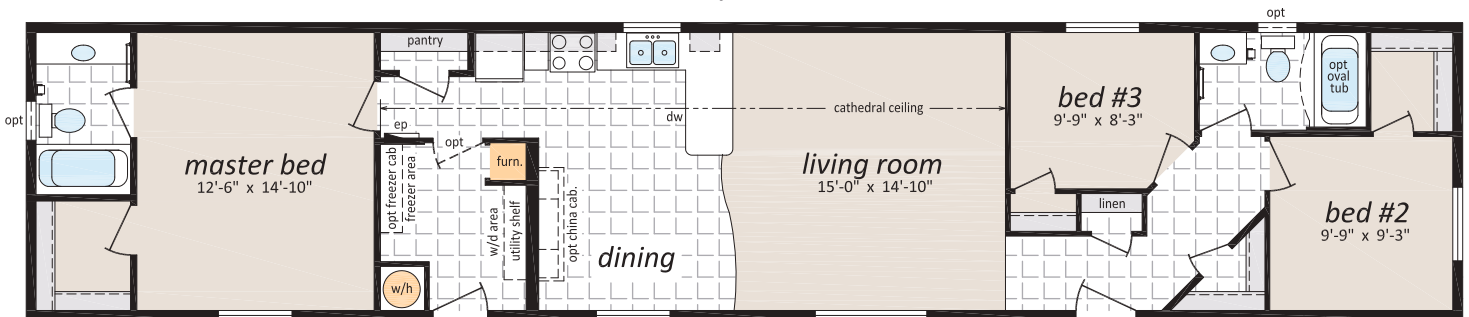
Starts From \$180,000



## ML-163

16' x 76' - 1,216 sq. ft.  
3 Beds, 2 Baths

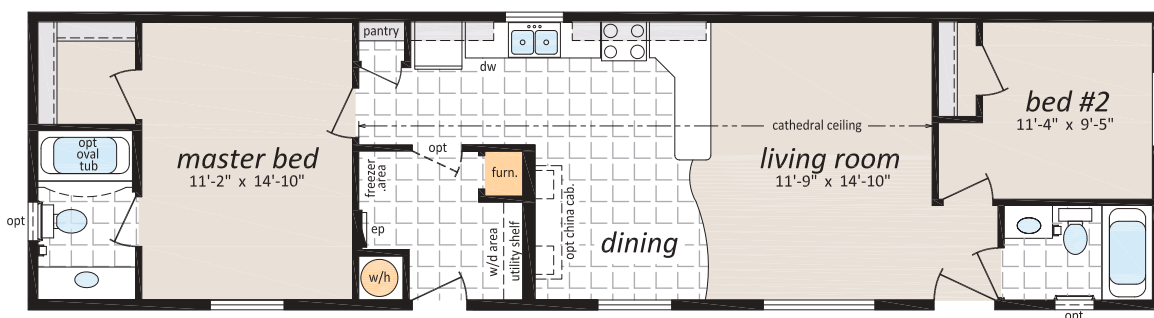
Starts From \$180,000



## ML-164

16' x 60' - 960 sq. ft.  
2 Beds, 2 Baths

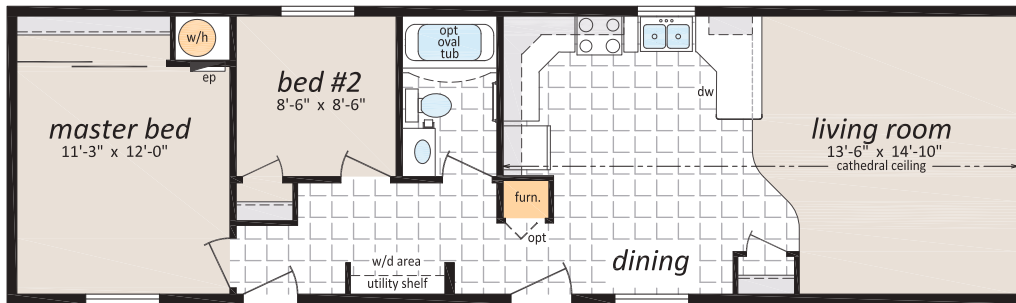
Starts From \$160,000



## ML-165

16' x 54' - 864 sq. ft.  
2 Beds, 1 Bath

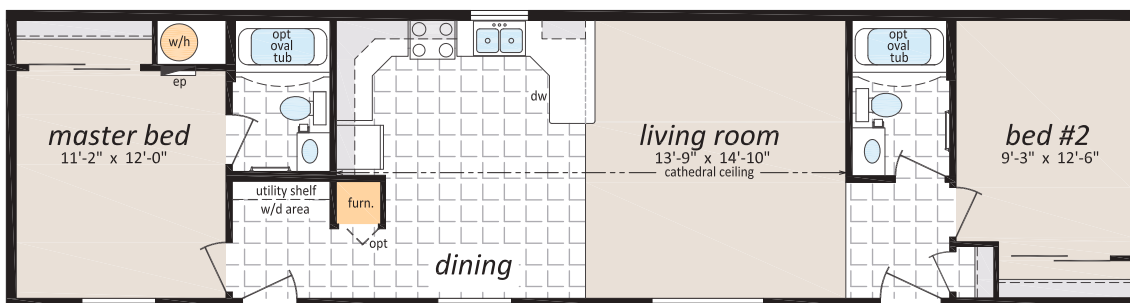
Starts From \$150,000



## ML-166

16' x 60' - 960 sq. ft.  
2 Beds, 2 Baths

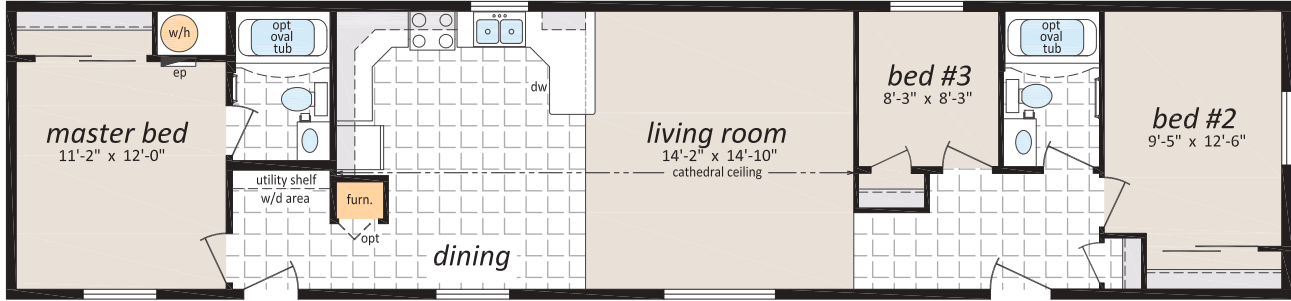
Starts From \$163,499



## ML-167

16' x 68' - 1,088 sq. ft.  
3 Beds, 2 Baths

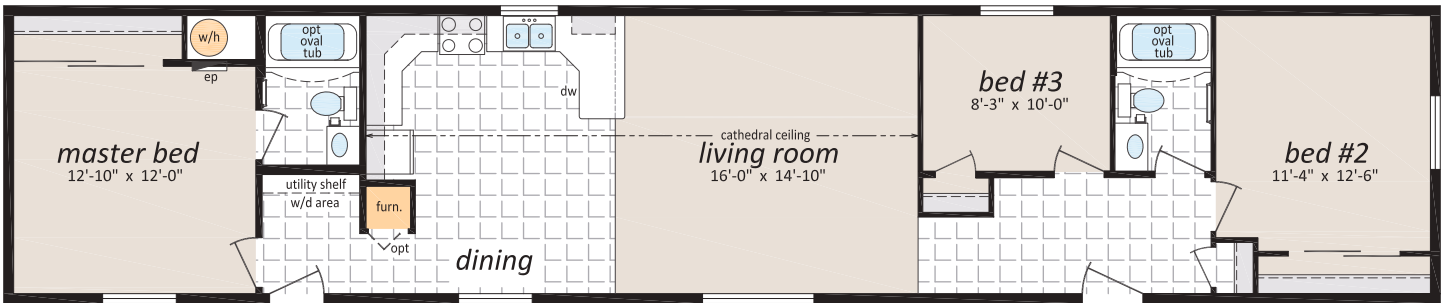
Starts From \$163,499



## ML-168

16' x 76' - 1,216 sq. ft.  
3 Beds, 2 Baths

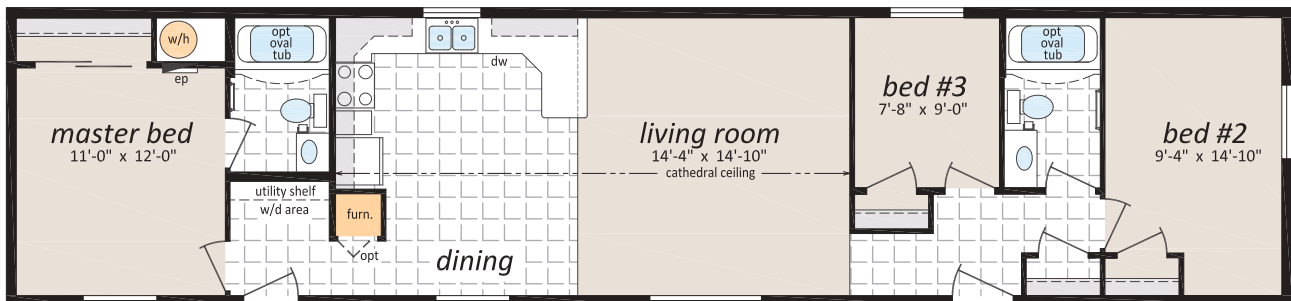
Starts From \$189,000



## ML-169

16' x 68' - 1,088 sq. ft.  
3 Beds, 2 Baths

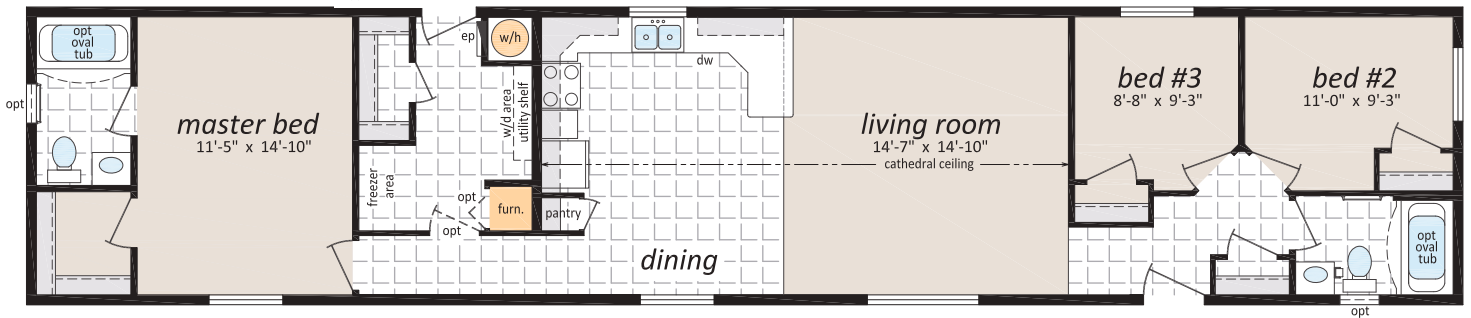
Starts From \$178,000



## ML-170

16' x 76' - 1,216 sq. ft.  
3 Beds, 2 Baths

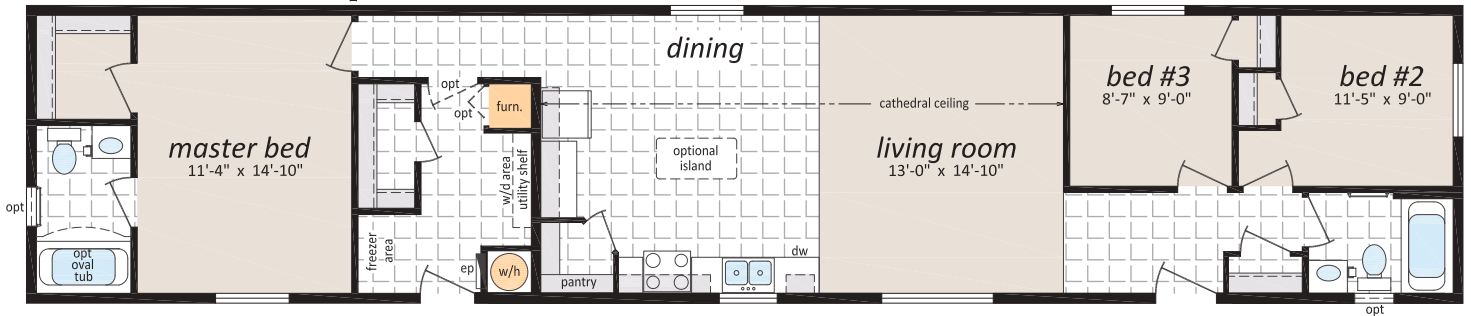
Starts From \$189,000



## ML-171

16' x 76' - 1,216 sq. ft.  
3 Beds, 2 Baths

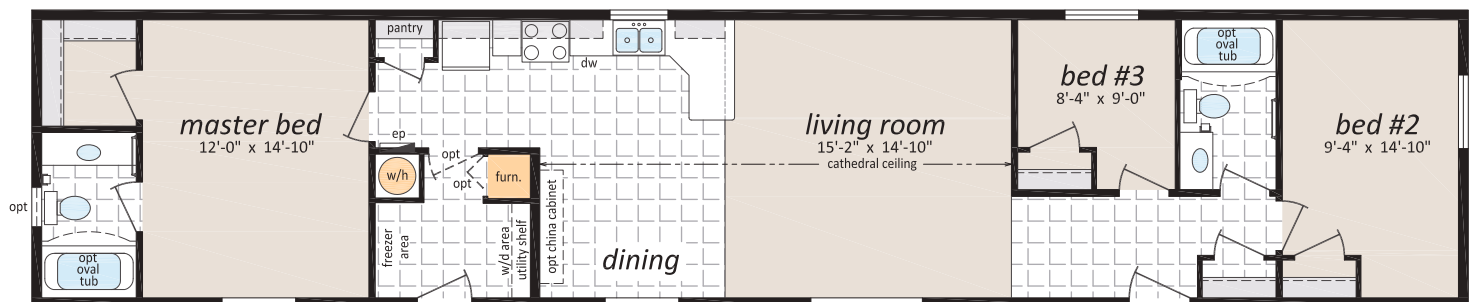
Starts From \$193,000



## ML-172

16' x 76' - 1,216 sq. ft.  
3 Beds, 2 Baths

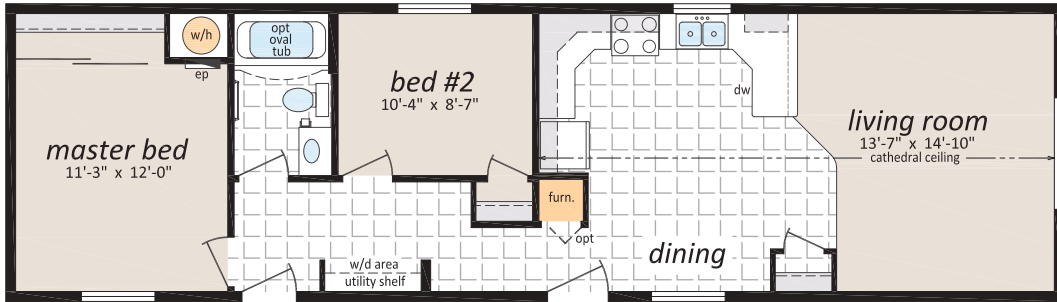
Starts From \$193,499



## ML-173

16' x 56' - 896 sq. ft.  
2 Beds, 1 Bath

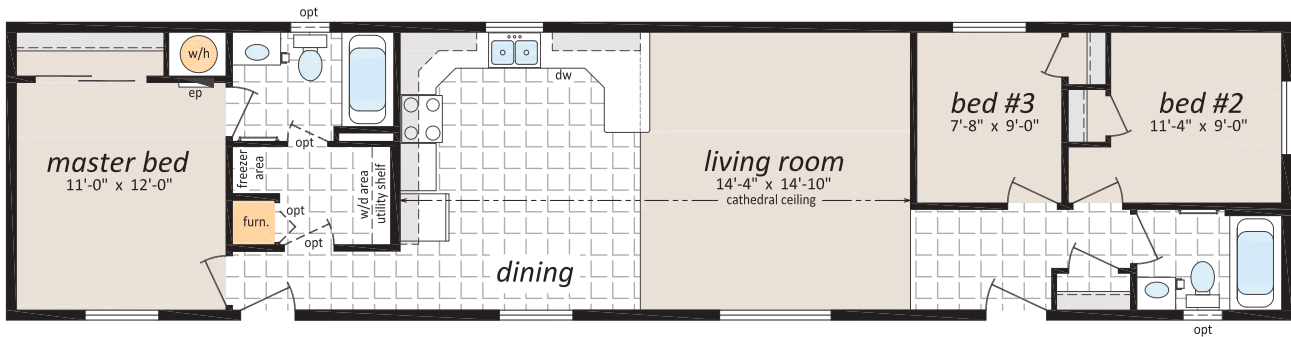
Starts From \$159,000



## ML-174

16' x 68' - 1,088 sq. ft.  
3 Beds, 2 Bath

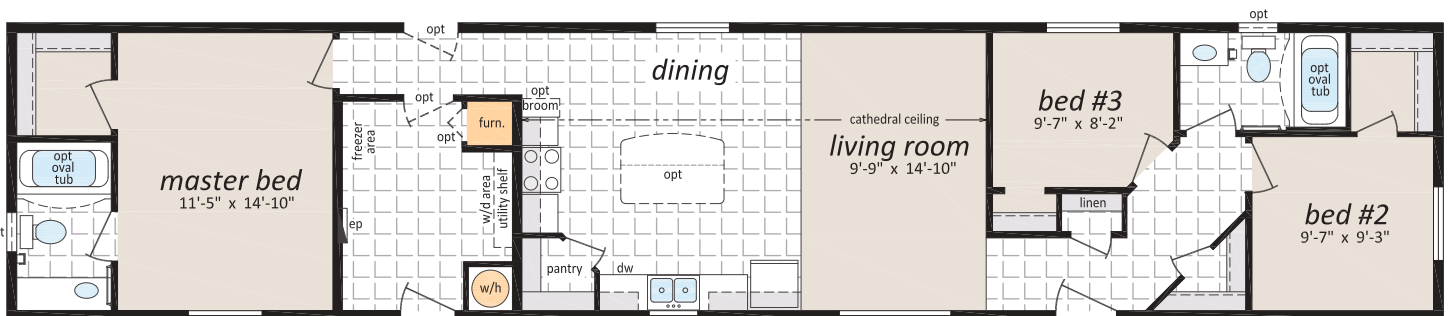
Starts From \$179,000



## ML-1610

16' x 76' - 1,216 sq. ft.  
3 Beds, 2 Baths

Starts From \$181,599

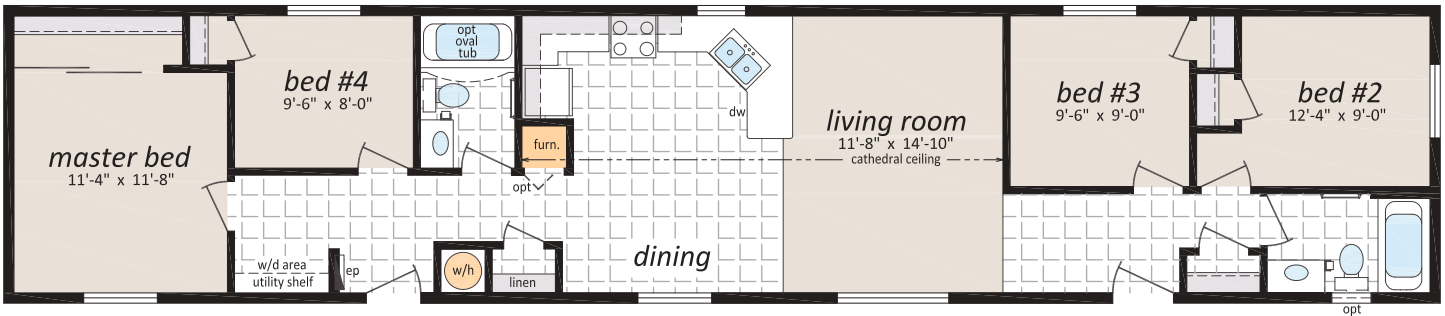




### ML-1615

16' x 76' - 1,216 sq. ft.  
4 Beds, 2 Baths

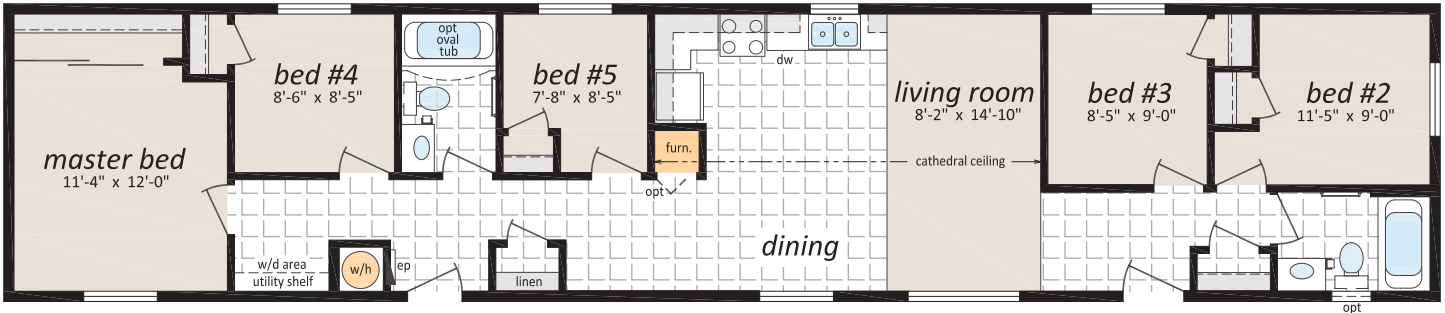
Starts From \$184,999



### ML-1616

16' x 76' - 1,216 sq. ft.  
5 Beds, 2 Baths

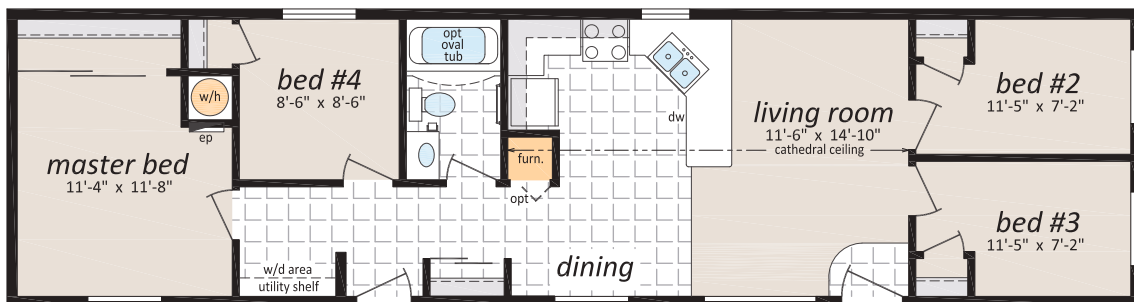
Starts From \$189,000



### ML-1617

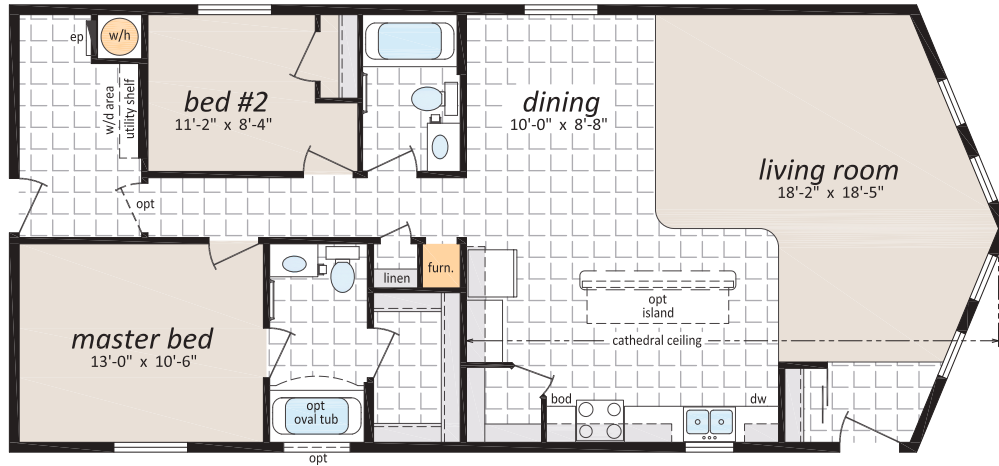
16' x 60' - 960 sq. ft.  
4 Beds, 1 Bath

Starts From \$162,499



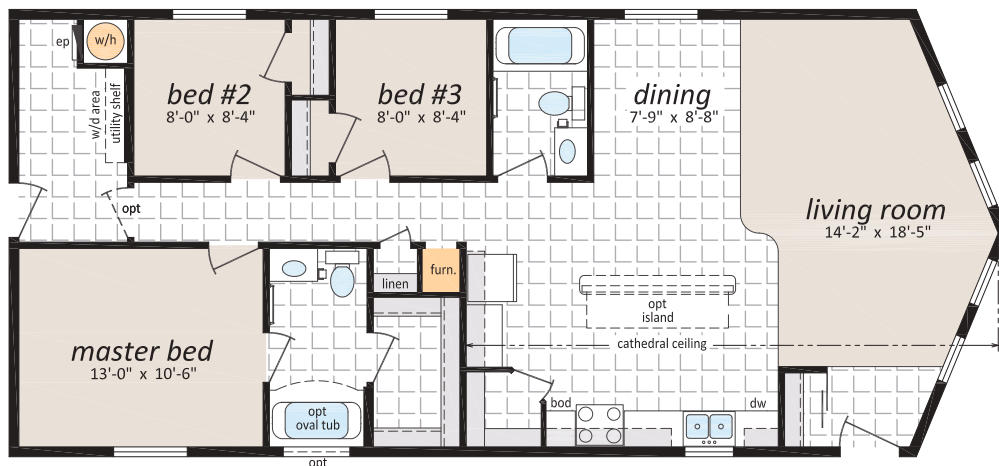
## ML-241

24' x 53' - 1,248 sq. ft.  
2 Beds, 2 Baths, Prow Front Starts From \$162,499



## ML-242

24' x 53' - 1,248 sq. ft.  
3 Beds, 2 Baths, Prow Front



## ML-243

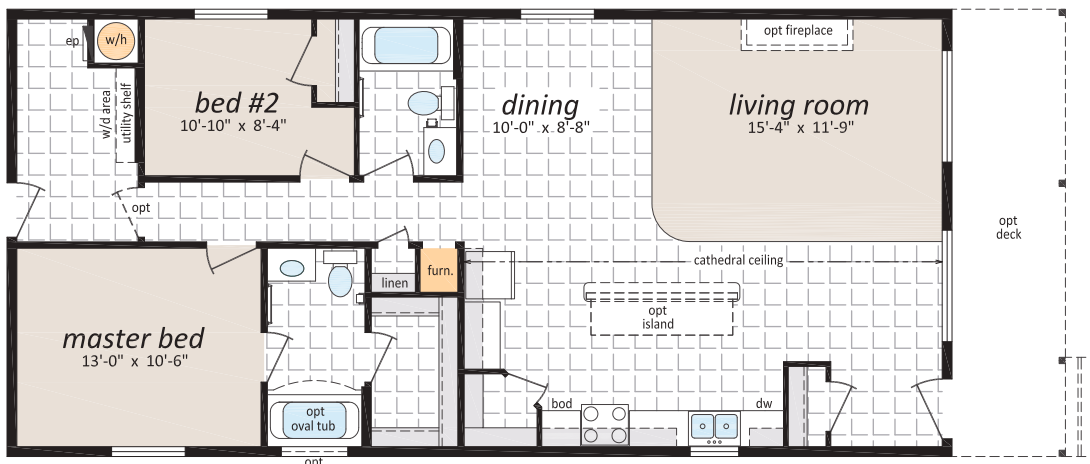
24' x 50' - 1,200 sq. ft.  
3 Beds, 2 Baths

Starts From \$259,000



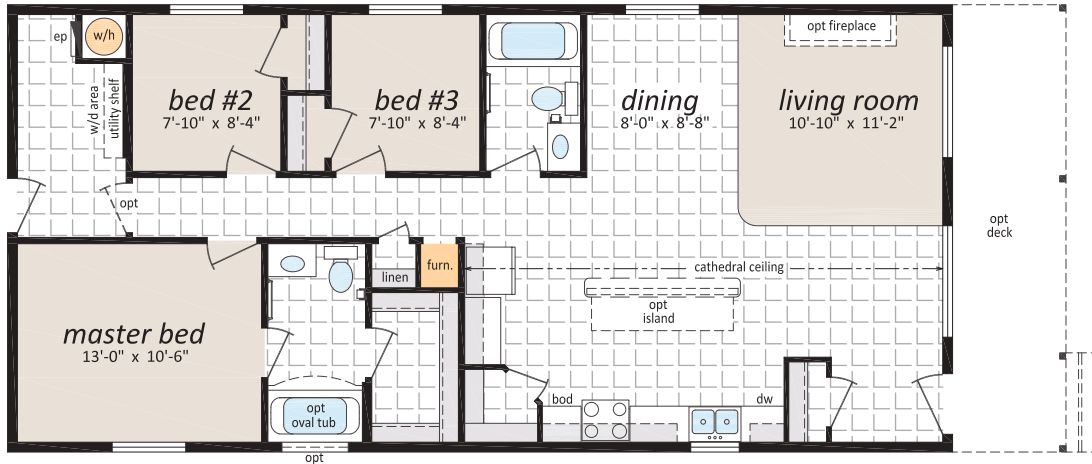
## ML-244

24' x 50' - 1,200 sq. ft.  
2 Beds, 2 Baths, Optional Porch



## ML-245

24' x 50' - 1,200 sq. ft.  
3 Beds, 2 Baths, Optional Porch



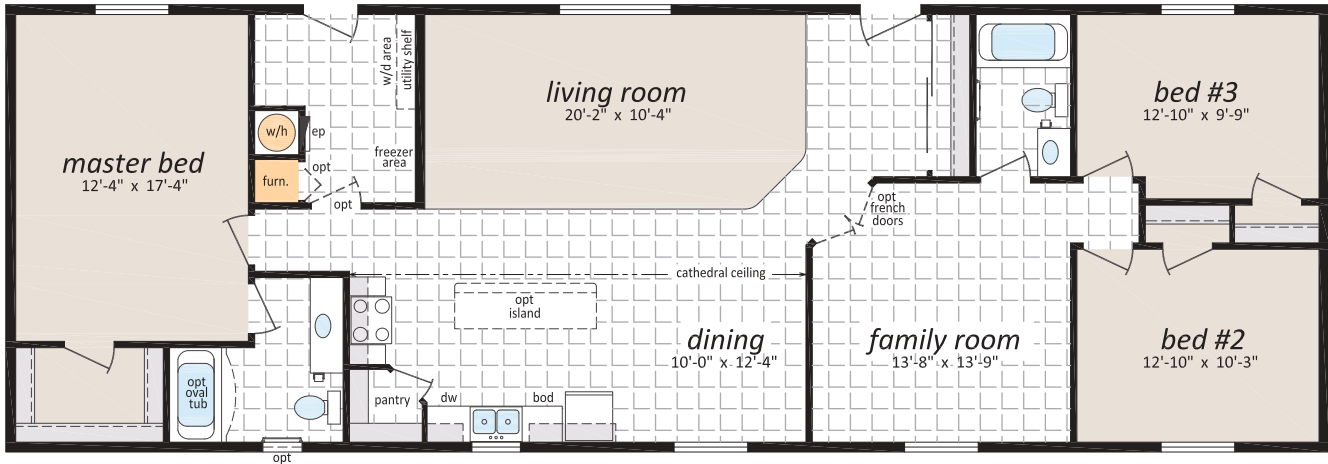
## ML-246

24' x 60' - 1,440 sq. ft.  
3 Beds, 2 Baths



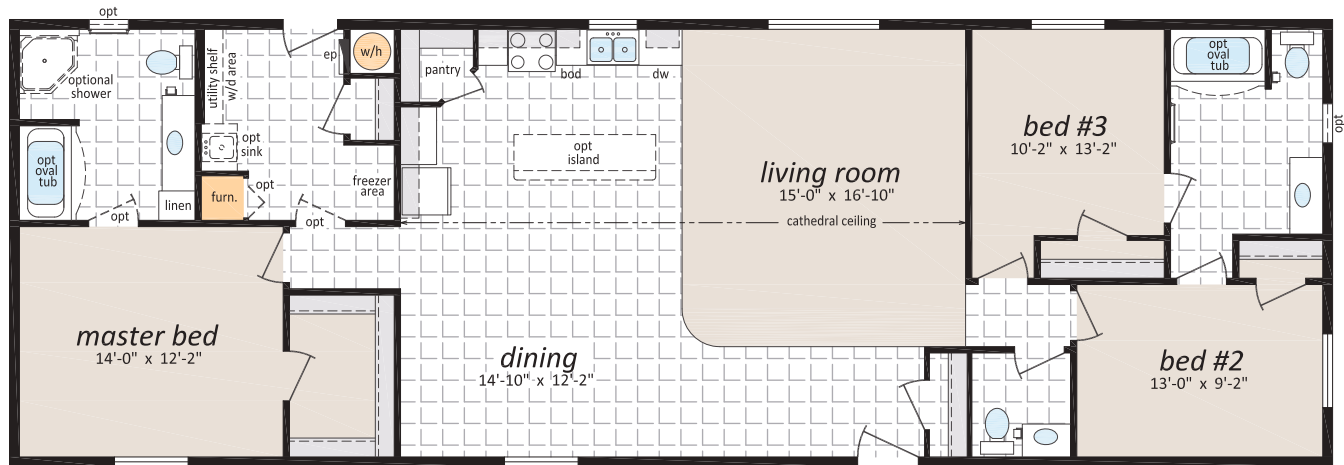
## ML-247

24' x 70' - 1,680 sq. ft.  
3 Beds, 2 Baths



## ML-248

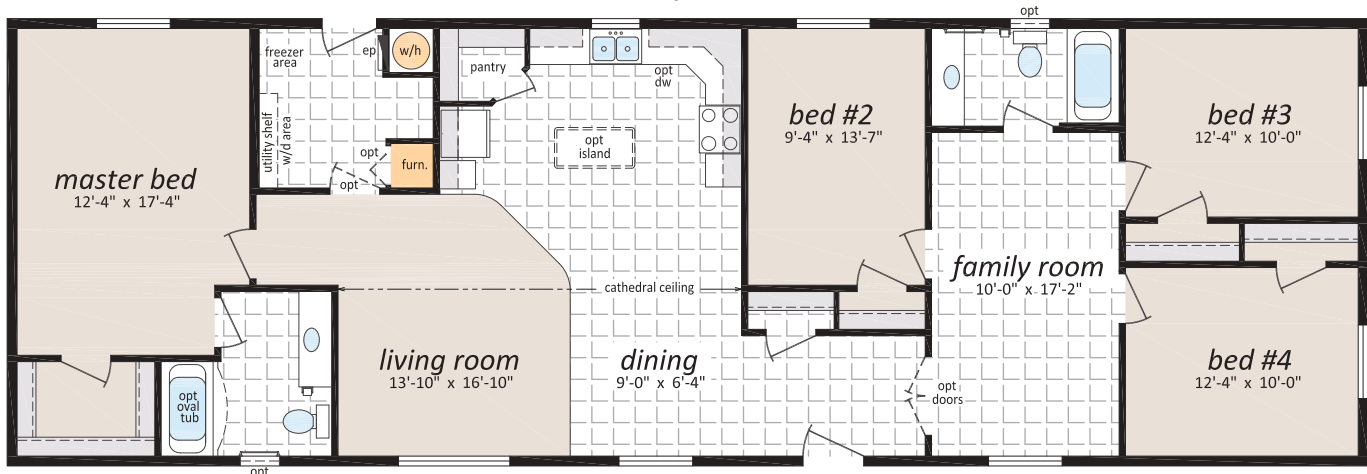
24' x 70' - 1,680 sq. ft.  
3 Beds, 2.5 Baths



## ML-249

24' x 72' - 1,728 sq. ft.  
4 Beds, 2 Baths

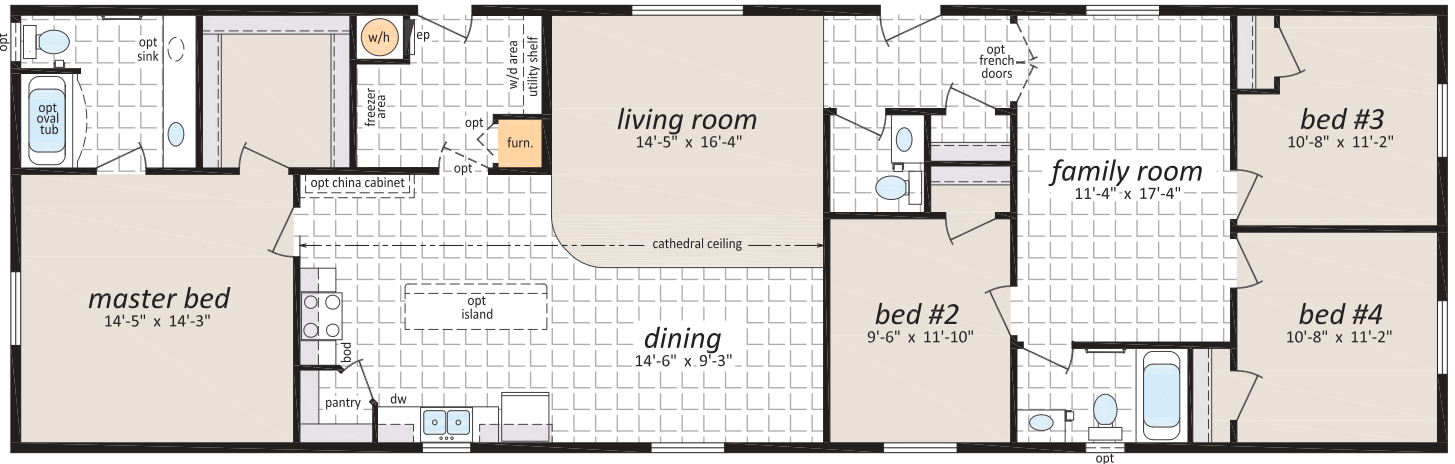
Starts From \$339,000



## ML-2410

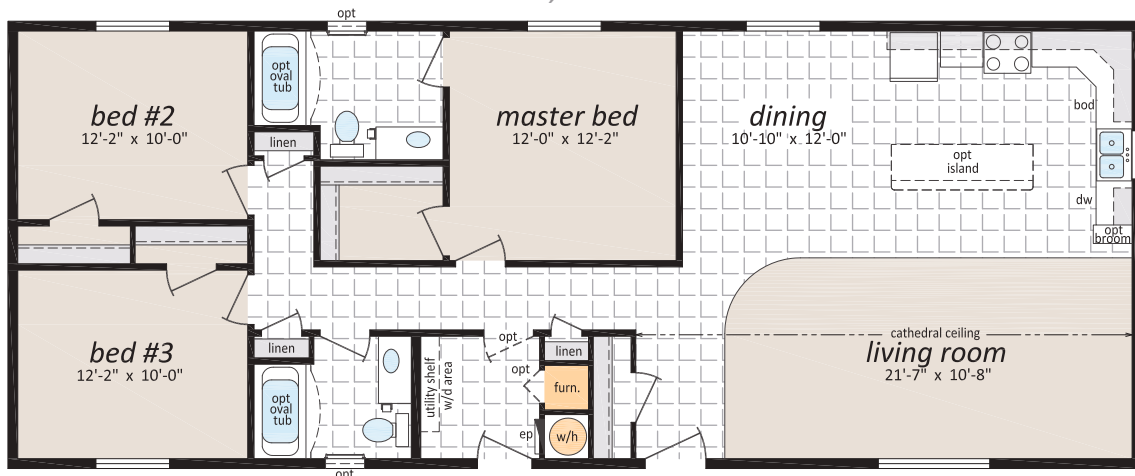
24' x 76' - 1,824 sq. ft.  
4 Beds, 2 Baths

Starts From \$349,000



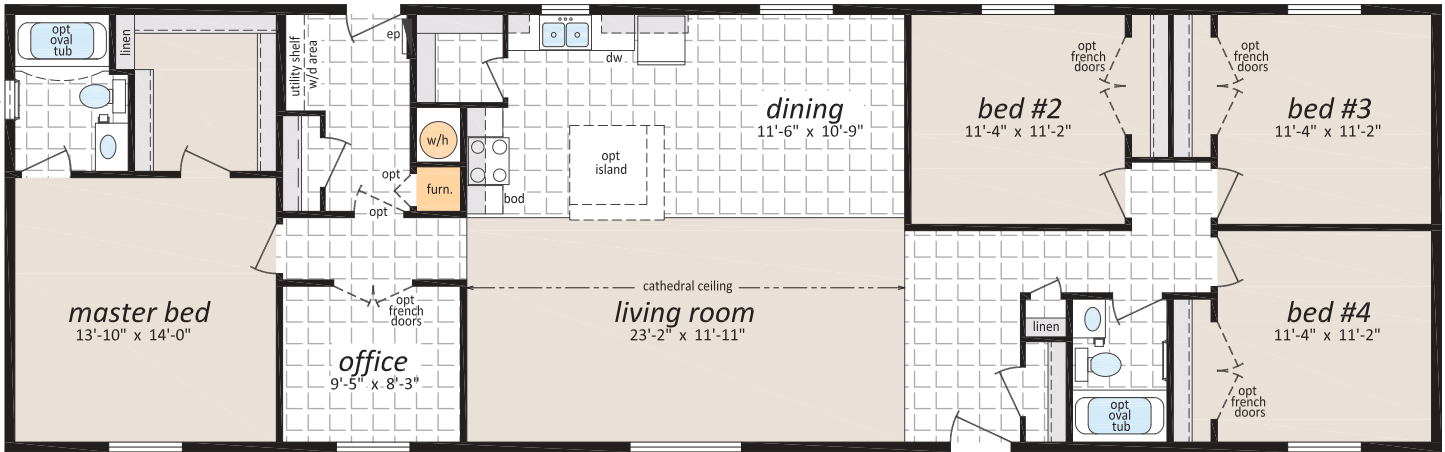
## ML-2411

24' x 60' - 1,440 sq. ft.  
3 Beds, 2 Baths



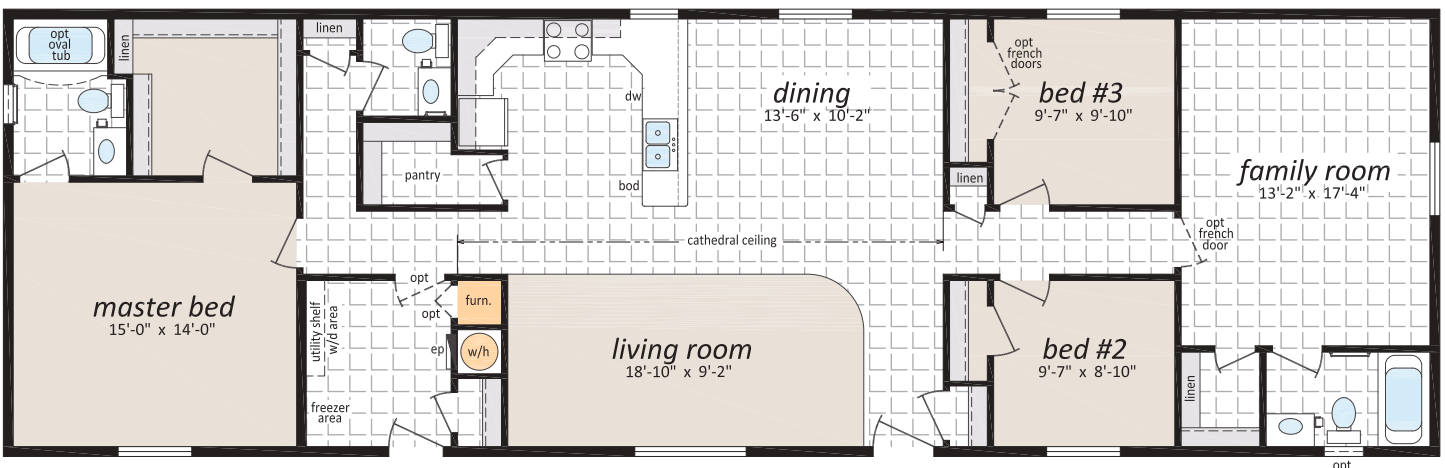
## ML-2412

24' x 76' - 1,824 sq. ft.  
4 Beds, 2 Baths



## ML-2413

24' x 76' - 1,824 sq. ft.  
4 Beds, 2.5 Baths



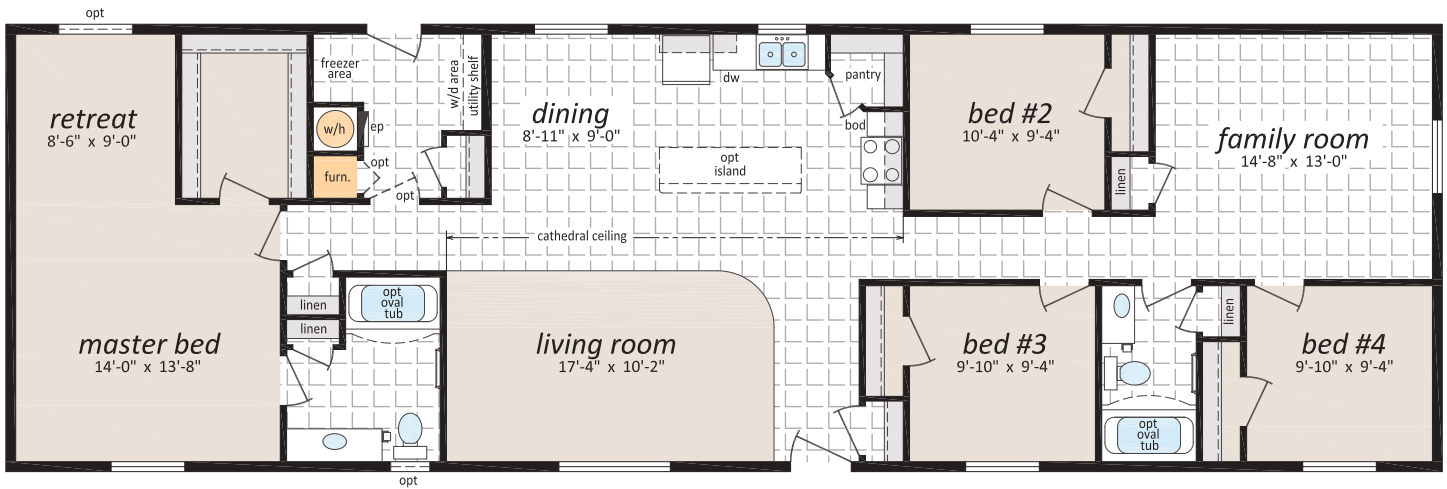
## ML-2414

24' x 76' - 1,824 sq. ft.  
4 Beds, 2 Baths

Starts From \$349,000



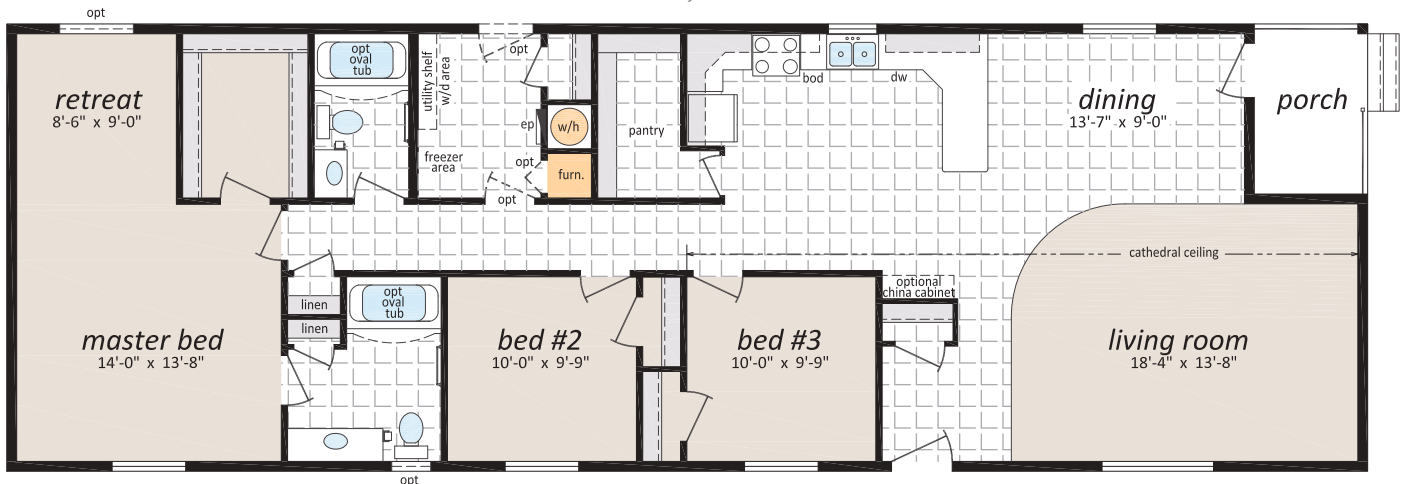
Artist Rendering;  
may show optional features



## ML-2415

24' x 72' - 1,728 sq. ft.  
3 Beds, 2 Baths

Starts From \$350,000





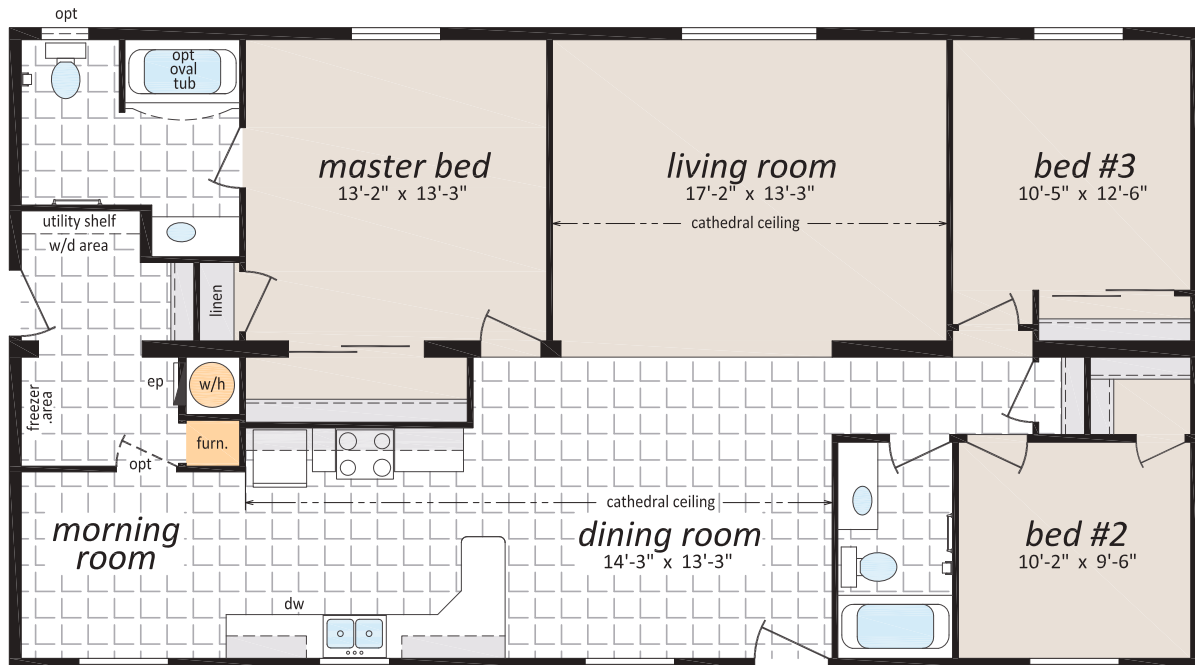
## ML-28521

28' x 52' - 1,456 sq. ft.  
3 Beds, 2 Baths, Morning Room

Starts From \$260,000



Artist Rendering;  
may show optional features



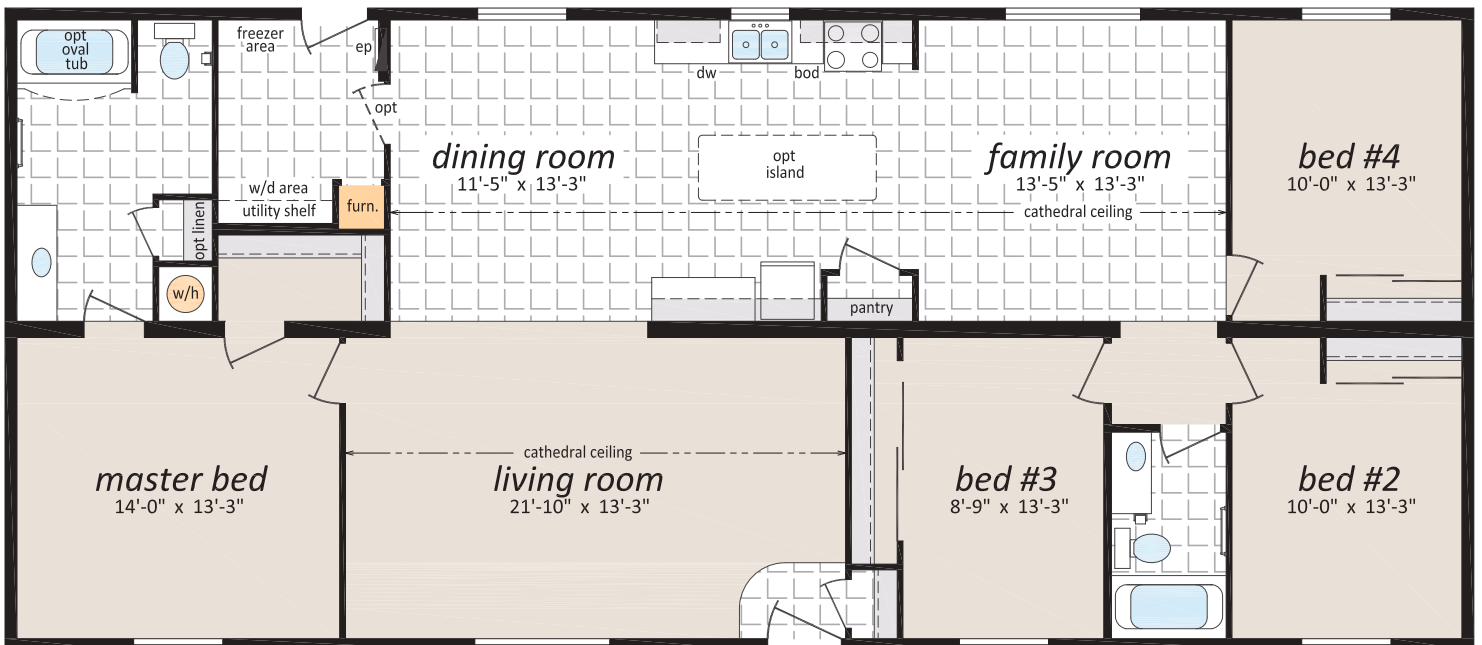
## ML-28641

28' x 64' - 1,792 sq. ft.  
4 Beds, 2 Baths, Family Room

Starts From \$280,000



Artist Rendering;  
may show optional features





Eurostyle Rangehood and Pot Filler Faucet



Chevron Barn Wood Accent on Island



LED Lit Vanity Mirror



Barn Door Interior Door



Gas Stovetop & Deep Double Sink



Electric Fireplace with Barn Wood Accent



Orleans Coloured Exterior Door

## OPTIONAL FEATURES

### Exteriors

- Skylights
- Deluxe Garden Doors
- Patio Doors
- 9 Light Exterior Door
- Polyurethane Stone Accents
- Vinyl Shakes in Gable
- Octagon Windows
- Oval Exterior door w/vented sidelight
- "Panorama" Living Room Windows  
c/w Diamond Cut Ceiling
- Sequoia Select Upgrade Vinyl Siding
- Turbine Vents
- Extra Exterior GFI
- High Snow Load

### Interiors

- Painted Drywall Throughout Home
- Cathedral Ceiling in Master Bedroom
- Laminate Flooring
- Carpet in 2nd and 3rd Bedrooms
- French Doors
- Mirrored Closet Doors
- Freezer Cabinets
- Utility Room Door c/w Grill
- Ceiling Fan with Lights
- 2 - 4' Ceiling Mount or Recessed Fluorescent  
Lights
- Decora Switch Package
- 2" PVC Blinds
- Programmable Thermostat
- Benton Style Doors

### Bathroom

- Glass Mosaic Tile Back splash
- Ceramic Tile Back splash
- Jetted Oval Tub
- Jetted One Piece Tub and Shower
- 60" Shower c/w Glass Doors
- Accessible Toilet
- Grab Bars
- Full tiled shower w/sliding glass doors
- Vessel Vanity Sink w/ 90 degree Faucet

### Kitchen

- Raised Panel Solid Wood Cabinet Doors
- European Stainless Steel Range hood
- Etched Glass Cabinet Doors
- China Cabinets and Hutches
- Under Cabinet Lighting
- Upgrade High Definition Laminate Counter tops
- Ceramic Tile Back splash
- Glass Mosaic Tile Back splash
- Tip Out Soap Tray Below Kitchen Sink
- 4 Bulb Track Light c/w Dimmer Switch
- 24" Fluorescent Light Above Kitchen Sink
- Pot and Pan Drawers
- Combination Microwave and Range hood
- Goose Neck Moen Faucet

### Utilities

- Gas Fireplace complete with Air Circulating Fan
- Gas Water Heater
- Gas Furnace
- Oil Gun Furnace
- Self Cleaning Range
- Two Door Side By Side Refrigerator
- Handi-Hite Bottom Mount Refrigerator
- Stacking Washer and Dryer
- Front Load Washer and Dryer
- Central Vacuum System
- Roughed in for Central Vacuum
- Air Conditioner Ready Furnace
- 2 1/2 Ton Air Conditioner
- Extra Telephone Jacks
- Surge Protector
- Garage Ready Package

**Check off your extras ...**

... and we will take care of the rest!



# The Mainline Home Series



**SHELTER HOME SYSTEMS**

P.O. Box 845 #200 Hwy 18 West  
Estevan, SK S4A 2A7  
[www.shelterhomes.ca](http://www.shelterhomes.ca)



Authorized Retailer:

**NOR-FAB**  
System Built Homes



[www.nor-fab.com](http://www.nor-fab.com)